

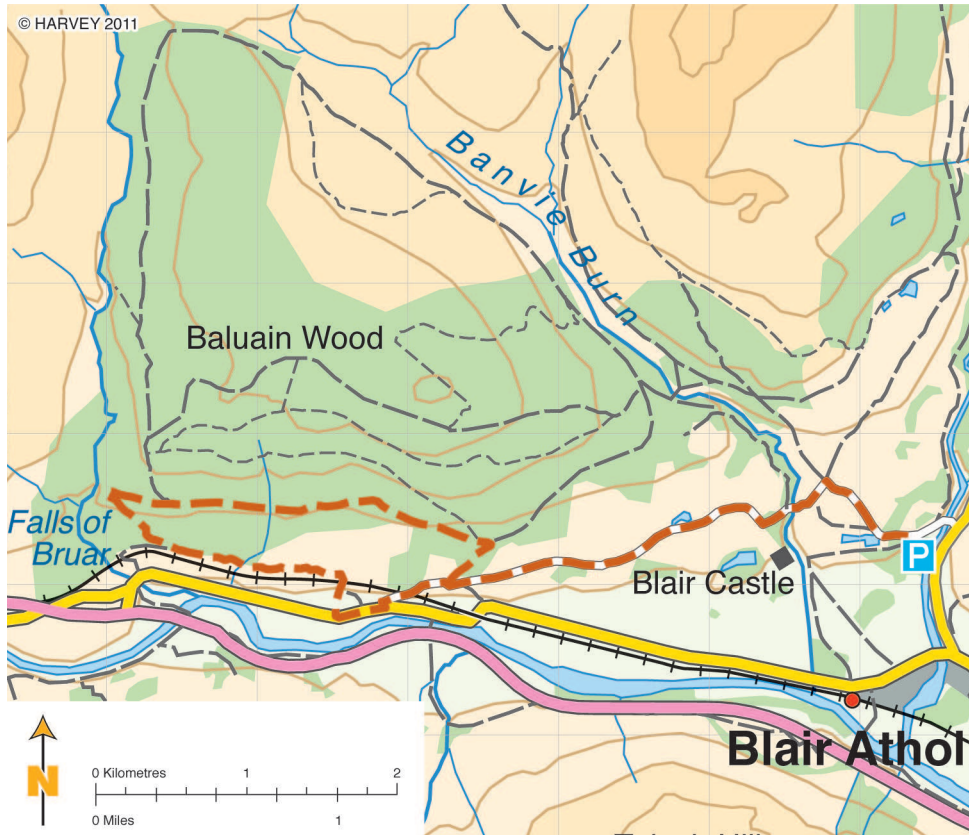
Scottish Mountain Bike Trails: HIGHLAND PERTSHIRE

BLAIR ATHOLL: ROUTE NO.13

FALLS OF BRUAR FROM BLAIR CASTLE



© HARVEY 2011



STARTING POINT(S)

PH18 5TZ – Glen Tilt Car Park

SUMMARY

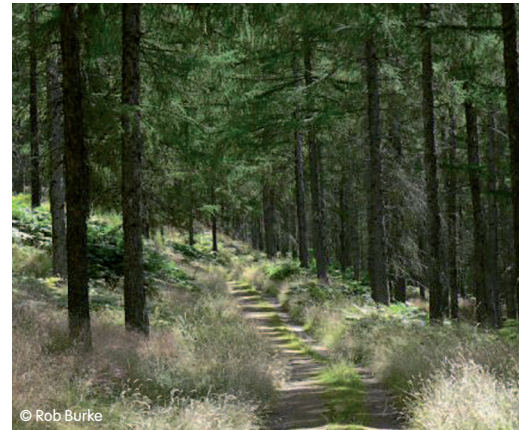
Partly circular route taking you to the stunning Falls of Bruar, which you will need to explore on foot.

MAX HEIGHT GAINED

90m

LENGTH

14.5km



© Rob Burke

Scottish Mountain Bike Trails: HIGHLAND PERTSHIRE FALLS OF BRUAR FROM BLAIR CASTLE

For more information on Highland Perthshire visit:

www.cyclehighlandperthshire.com

www.highlandperthshirepaths.co.uk

www.developingmountainbikinginscotland.com

ROUTE NO
13

ROUTE DESCRIPTION

This route has very short stretches of public road, but for the most part is a mix of tracks through the fields surrounding Blair Castle with a woodland section taking you to the farthest point at the Falls of Bruar.

From the car park, head left to Old Blair, going left at the crossroads. At a sharp left bend, go right on the West Drive past fields. After 2 miles, turn right and soon left through a gate. This now takes you on to the Falls. From the viewpoint, keep on the main track down to the public road. Follow this for a mile and re-enter the castle grounds through the gate at the West Lodge, from there retracing your route back to the car park.

DO THE RIDE THING

We love riding this route and to keep our good relationship with local landowners and other path users we ask you to follow the advice below:

- Let other path users know you are coming as early as possible.
- Please watch your speed especially on blind corners and dips.
- Please take extra care near wildlife and leave the environment as you find it.
- Help land managers and others to work safely and effectively. See 'Route Specifics'.
- The route description and quality of path may change over time so please remain flexible with your plans and be ready to use alternative routes.
- Check the weather forecast and ensure you have all the equipment you need for your route.
- If you are in any doubt please pop into one of our cycle centres for advice!

ROUTE SPECIFICS

- Please stay to the promoted trail.
- As this is a working estate please observe all signage
- You may meet pony trekkers on this route.
- Please make your presence known especially if you are overtaking.



© Rob Burke

CYCLING FRIENDLY BUSINESSES NEAR THIS TRAIL

FOOD IN THE PARK

Blair Atholl 01796 481484

Large car park meeting place. Café, Fish & Chips, Pizza

BASECAMP AT THE FIRS

Blair Atholl 01796 481256

Basic bike spares, ex-MTBikes sales, bike racks. Guest bike facilities.

www.firs-blairatholl.co.uk

BLAIR ATHOLL WATERMILL & TEA ROOM

Blair Atholl 01796 481321

Cycle friendly tearoom.

Bike racks to be installed in 2011.

www.blairathollwatermill.co.uk

ATHOLL ARMS & BOTHY BAR

Blair Atholl 01796 481205

Meals and bar. Hose for bike wash

www.athollarmshotel.co.uk

CYCLING CENTRES IN HIGHLAND PERTSHIRE

HIGHLAND SAFARIS

Biketrax MTB skills loop; bike hire/wash/spares/racks. Local knowledge. Café. Visitor attraction inc Land Rover safaris.

Dull, nr Aberfeldy.

T: 01887 820071

www.highlandsafaris.net



ESCAPE ROUTE

Perthshire's Premier Cycle & Outdoor Retailer. Quality bikes for sale or rent/bike servicing/ vast clothing & footwear dept/extensive route advice/fine coffee. Pitlochry.

T: 01796 473 859

www.escape-route.biz



PROGRESSION BIKES

Bike hire/guided trips/coaching & development/ uplift service/ maintenance/bike wash/ refreshments. Dunkeld.

T: 07825 322225

www.progressionbikesscotland.com



Perthshire

